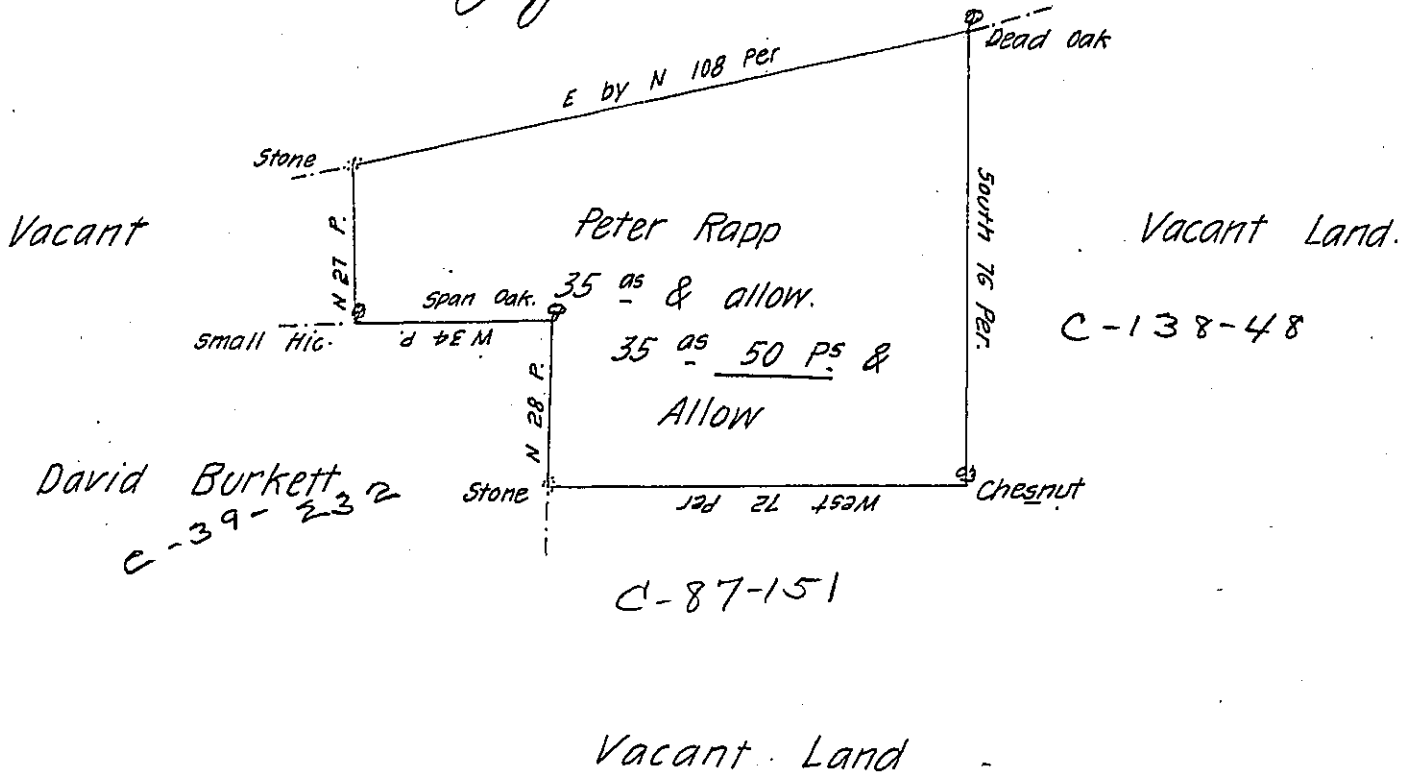


Peter Rapp

Fig. 74



By Virtue of a Warrant dated the 8th day of October
 Anno Domini 1745 The above described Tract of Land was Surveyed
 to Peter Rapp in Erle Towp. in in Lancaster County &c. Containing 35
 acres beside Allowanc-

ye 28th Day of 8^{br} 1745

Saml Lightfoot-

IN TESTIMONY that the above is a copy of the original remaining on file in
 the Department of Internal Affairs of Pennsylvania, made
 conformably to an Act of Assembly approved the 16th day of
 February, 1833, I have hereunto set my Hand and caused
 the Seal of said Department to be affixed at Harrisburg,
 this fifteenth day of August 1906

Lea C. R. Brown
 Secretary of Internal Affairs